

Allegro $\text{♩} = 144$

III.

Allegro molto e marcato $\text{♩} = 160$

Allegro ♩ = 144.

III.

V. Cello

Piano

Allegro molto e marcato. ♩ = 160.

Handwritten musical notation on a single staff, featuring a melodic line with various note values and rests. A dynamic marking *p* is visible at the beginning of the second measure.

Handwritten musical notation on two staves. The upper staff contains a melodic line with slurs and accents. The lower staff contains a bass line with chords and a dynamic marking *fp*.

Handwritten musical notation on a single staff, showing a melodic line with a dynamic marking *fp* at the start.

Handwritten musical notation on two staves. The upper staff has a melodic line with slurs and accents, and a dynamic marking *fp*. The lower staff contains a bass line with chords and a dynamic marking *fp*.

Handwritten musical notation on a single staff, featuring a melodic line with a dynamic marking *fp* and a *rit.* marking.

Handwritten musical notation on two staves. The upper staff has a melodic line with slurs and accents, and a dynamic marking *fp*. The lower staff contains a bass line with chords and a dynamic marking *fp*.

Handwritten musical notation on a single staff, showing a melodic line with a dynamic marking *f*.

Handwritten musical notation on two staves. The upper staff has a melodic line with slurs and accents, and a dynamic marking *f*. The lower staff contains a bass line with chords and a dynamic marking *f*.

pp

Handwritten musical notation on a single staff, featuring a melodic line with various ornaments and dynamics. The word *dim* is written below the staff.

Handwritten musical notation on a grand staff (treble and bass clefs). The word *dim* is written between the staves.

Handwritten musical notation on a single staff. The word *resc* is written above the staff, and *mf* is written below it.

Handwritten musical notation on a grand staff. Dynamics *pp* and *mf* are written between the staves. The word *Andante* is written vertically on the right side of the page.

Handwritten musical notation on a single staff. The word *Andante* is written above the staff.

Handwritten musical notation on a grand staff. The word *Andante* is written vertically on the right side of the page.

Handwritten musical notation on a single staff. The word *Andante* is written above the staff.

Handwritten musical notation on a grand staff. The word *Andante* is written vertically on the right side of the page.

Handwritten musical score for voice and piano. The score is written on ten staves, with the top staff being the vocal line and the remaining nine staves being the piano accompaniment. The music is in a key with one sharp (F#) and a common time signature (C). The score includes various musical notations such as notes, rests, slurs, and dynamic markings. There are several instances of crossed-out or heavily scribbled-out passages, particularly in the first system and the middle section. The word "viva" is written above the vocal line in the first system. The piano part features complex textures with many sixteenth and thirty-second notes, often beamed together. The overall style is that of a working draft or a composer's sketch.

f ten.

Handwritten musical notation for the first system, featuring a treble clef and a melodic line with various notes and rests.

Handwritten musical notation for the second system, consisting of two staves with notes and rests.

tranz. miz

Handwritten musical notation for the third system, featuring a treble clef and a melodic line with notes and rests.

tranz.

Handwritten musical notation for the fourth system, consisting of two staves with notes and rests.

Handwritten musical notation for the fifth system, featuring a treble clef and a melodic line with notes and rests.

Handwritten musical notation for the sixth system, consisting of two staves with notes and rests.

Handwritten musical notation for the seventh system, featuring a treble clef and a melodic line with notes and rests.

Handwritten musical notation for the eighth system, consisting of two staves with notes and rests.

*And.
a tempo,
ma tranqu.
mo*

poco rit.

Musical staff with notes and dynamics: *mf*

Piano accompaniment staff with notes and dynamics: *poco rit.*, *allato*, *p*

Musical staff with notes and dynamics: *mf*

Piano accompaniment staff with notes and dynamics: *allato*, *p*

Musical staff with notes and dynamics: *pp*, *Dolcissimo*, *cresc.*

Piano accompaniment staff with notes and dynamics: *pp*, *cresc.*

Musical staff with notes and dynamics: *pp*, *Dolcissimo*, *cresc.*, *poco rit.*

Piano accompaniment staff with notes and dynamics: *pp*, *cresc.*, *poco rit.*

a tempo

*a tempo
piu animato
pp*

Musical staff with notes and rests.

Musical staff with notes and rests, including dynamic markings *pp* and *ppp*.

Musical staff with notes and rests, including dynamic marking *pp*.

Musical staff with notes and rests, including dynamic marking *pp*.

crescendo molto

Musical staff with notes and rests.

Musical staff with notes and rests, including dynamic marking *f*.

crescendo molto

Musical staff with notes and rests, including dynamic marking *f*.

Musical staff with notes and rests, including dynamic marking *f*.

Musical staff with notes and rests, including dynamic marking *f*.

Musical staff with notes and rests, including dynamic marking *f*.

Handwritten musical notation on a single staff, featuring various notes, rests, and dynamic markings.

Handwritten musical notation on two staves, including notes, rests, and dynamic markings.

Handwritten musical notation on a single staff, including notes, rests, and dynamic markings.

Handwritten musical notation on two staves, including notes, rests, and dynamic markings.

Handwritten musical notation on a single staff, including notes, rests, and dynamic markings.

Handwritten musical notation on two staves, including notes, rests, and dynamic markings.

Handwritten musical notation on a single staff, including notes, rests, and dynamic markings.

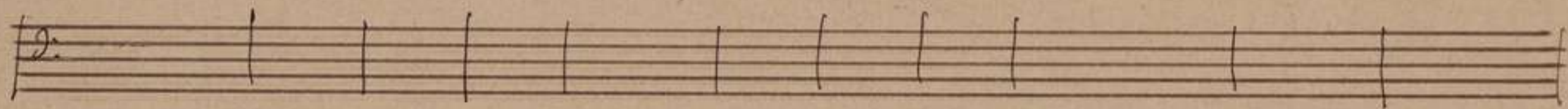
Handwritten musical notation on two staves, including notes, rests, and dynamic markings.

Handwritten musical score for piano, consisting of multiple systems of staves. The notation includes treble and bass clefs, various note values, rests, and dynamic markings. The score is written in a dark ink on aged paper.

Key markings and annotations include:

- res. c.* (resonance)
- moet* (must)
- Sten* (Sten)
- men* (men)
- o'ring* (o'ring)
- pp* (pianissimo)
- ppp* (pianississimo)
- dim* (diminuendo)
- ben tenuto* (well sustained)
- Sm* (Sforzando)

The score features complex harmonic structures with frequent chromaticism and dynamic contrasts. The notation is dense, with many notes beamed together and various articulation marks.



ppp *stretto*

stretto *ritard.*

cresc. molto

stretto

f *hang.*
a tempo
hang.

f

mf

Handwritten musical score for the first system. The top staff is a vocal line in a key with two flats (B-flat major or D-flat minor), starting with a mezzo-forte (*mf*) dynamic. The piano accompaniment is in the same key, with a piano (*p*) dynamic. The system includes a treble clef, a common time signature, and various musical notations such as notes, rests, and slurs.

A single staff of music, possibly a continuation or a specific part of the score, showing a series of notes and rests.

p

Handwritten musical score for the second system. The top staff is a vocal line in a key with two sharps (D major or F# minor), starting with a piano (*p*) dynamic. The piano accompaniment is in the same key, with a piano (*p*) dynamic. The system includes a treble clef, a common time signature, and various musical notations such as notes, rests, and slurs.

mf

Handwritten musical score for the third system. The top staff is a vocal line in a key with two sharps (D major or F# minor), starting with a mezzo-forte (*mf*) dynamic. The piano accompaniment is in the same key, with a piano (*p*) dynamic. The system includes a treble clef, a common time signature, and various musical notations such as notes, rests, and slurs.

A single staff of music, possibly a continuation or a specific part of the score, showing a series of notes and rests.

pp stacc. e leggiero

Handwritten musical score for the fourth system. The top staff is a piano accompaniment in a key with two sharps (D major or F# minor), starting with a pianissimo (*pp*) dynamic. The piano accompaniment is in the same key, with a piano (*p*) dynamic. The system includes a treble clef, a common time signature, and various musical notations such as notes, rests, and slurs.

Handwritten musical score for the first system. It consists of a single melodic line on a treble clef staff and a piano accompaniment on a grand staff (treble and bass clefs). The music is in a key with one flat and a 2/4 time signature. The melodic line features eighth and sixteenth notes with various accidentals. The piano accompaniment provides harmonic support with chords and moving lines.

Handwritten musical score for the second system. It features a single melodic line on a treble clef staff. Above the staff, the performance markings "poco a poco" and "cresc." are written. The notation includes eighth and sixteenth notes with accidentals, indicating a gradual increase in volume and intensity.

Handwritten musical score for the third system. It consists of a grand staff with piano accompaniment. The markings "poco a poco" and "cresc." are present. The piano part features complex chordal textures and moving lines in both hands.

Handwritten musical score for the fourth system. It features a single melodic line on a treble clef staff. The markings "poco a poco" and "cresc." are visible. The notation includes eighth and sixteenth notes with various accidentals and dynamic markings.

Handwritten musical score for the fifth system. It consists of a grand staff with piano accompaniment. The markings "poco a poco" and "cresc." are present. The piano part features complex chordal textures and moving lines in both hands.

Handwritten musical score for the sixth system. It features a single melodic line on a treble clef staff. The markings "poco a poco" and "cresc." are visible. The notation includes eighth and sixteenth notes with various accidentals and dynamic markings.

Handwritten musical score for the seventh system. It consists of a grand staff with piano accompaniment. The markings "poco a poco" and "cresc." are present. The piano part features complex chordal textures and moving lines in both hands.

brux

pm f

This is a handwritten musical score, likely for a piano and voice. The score is written on aged, yellowed paper and consists of several systems of staves. The notation includes treble and bass clefs, various note values, rests, and complex chord structures. There are several instances of the number '2' written above notes, possibly indicating a second ending or a specific fingering. Performance markings such as *p espr.* and *haus.* are present. The handwriting is fluid and characteristic of a composer's draft. The score is organized into systems, with some systems containing both piano and voice parts. The overall style is that of a personal manuscript or a working draft.

cresc.

pesante

cresc.

molto

pesante

poco ritard

rubato 10 min

e tempo

Handwritten musical notation on a single staff. It begins with a treble clef and a common time signature (C). The notation includes a half rest followed by a half note, then a series of eighth notes with slurs and ties. Above the staff, the tempo marking *a tempo* is written. Below the staff, there are dynamic markings *mf* and *p*.

Handwritten musical notation on two staves. The top staff continues with eighth notes and slurs. The bottom staff features a bass clef and a series of notes, some with slurs. Above the top staff, the tempo marking *a tempo* is written. Below the bottom staff, there are dynamic markings *mf* and *p*.

Handwritten musical notation on a single staff. It starts with a treble clef and a common time signature. The notation consists of a series of notes with slurs. Above the staff, the dynamic marking *pp* is written.

Handwritten musical notation on two staves. The top staff has a treble clef and common time, with eighth notes and slurs. The bottom staff has a bass clef and common time, with notes and slurs. Above the top staff, the dynamic marking *pp* is written. Below the bottom staff, there are dynamic markings *pp* and *mf*.

Handwritten musical notation on a single staff. It begins with a treble clef and a common time signature. The notation consists of a series of notes with slurs. Above the staff, the dynamic marking *mf* is written.

Handwritten musical notation on two staves. The top staff has a treble clef and common time, with eighth notes and slurs. The bottom staff has a bass clef and common time, with notes and slurs. Above the top staff, the dynamic marking *mf* is written. Below the bottom staff, there are dynamic markings *mf* and *ff*.

Handwritten musical notation on a single staff. It begins with a treble clef and a common time signature. The notation consists of eighth notes with slurs. Above the staff, the dynamic marking *ff* is written.

Handwritten musical notation on two staves. The top staff has a treble clef and common time, with eighth notes and slurs. The bottom staff has a bass clef and common time, with notes and slurs. Above the top staff, the dynamic marking *ff* is written. Below the bottom staff, there are dynamic markings *ff* and *mf*.

Handwritten musical score for piano, consisting of eight systems of staves. The notation includes treble and bass clefs, various time signatures, and dynamic markings such as *sp*, *marcato*, *cresc*, *dim*, and *f*. The score features complex rhythmic patterns, including sixteenth and thirty-second notes, and dense chordal textures. The manuscript shows signs of being a working draft, with some ink bleed-through and corrections.

Handwritten musical score for a string instrument, likely a violin or viola, in the key of D major (two sharps). The score is written on ten staves, with the first staff being a single line and the subsequent nine staves being grand staves (treble and bass clefs joined). The notation includes various rhythmic values, slurs, and dynamic markings. The word "arco" is written above the first staff and below the eighth staff. The score is densely written with many notes and rests, indicating a complex piece of music. The paper shows signs of age and wear, including a small tear at the bottom center.

arco

arco

cresc. *dim*

cresc. *dim.*

poco rit. *arco* *mf a tempo* *ma molto hang.*

poco rit. *a tempo*

pp *cresc.*

pp *cresc.*

poco ritard

dim *Dolce* *p* *cresc.*

dim *p* *cresc.* *m.g.*

a tempo *pp* *piu animato*

pp *piu animato*

pp *stacc. sempre*

cresc. vivo *ff*

cresc. molto *ff*

This is a handwritten musical score for piano, consisting of a single melodic line and a complex piano accompaniment. The score is written on ten systems of staves. The key signature is D major (two sharps), and the time signature is 2/4. The melodic line is written on a single staff, while the piano accompaniment is written on two staves (treble and bass clef) for each system. The accompaniment features a variety of textures, including chords, arpeggios, and moving lines. There are several instances of dynamic markings such as *mf* and *ff*, and some phrasing slurs. The handwriting is clear and legible, with some corrections and erasures visible. The paper shows signs of age, with some discoloration and wear.

ri - tar - ran - do

a tempo (e shatto
piu animato)

mf

mf ri - tar - ran - do

pp

a tempo e shatto

cresc

piu cresc. poco a poco

piu cresc. poco a poco

Musical staff with treble clef, key signature of two sharps (F# and C#), and a melody consisting of quarter and eighth notes.

Piano accompaniment for the first system, featuring chords and arpeggiated figures in both hands.

Musical staff with treble clef, continuing the melody from the first system.

Piano accompaniment for the second system, including dynamic markings such as *molto*, *meno*, and *molto*.

Musical staff with treble clef, featuring a *pesante* marking and a change in the melodic line.

Piano accompaniment for the third system, with *pesante* and *forte* markings, and a dense chordal texture.

Musical staff with treble clef, starting with a *francamente* marking and a series of beamed notes.

Piano accompaniment for the fourth system, including *francamente* and *forte* markings, and a complex rhythmic accompaniment.

Handwritten musical notation on a single staff. It begins with a treble clef and a key signature of two sharps (F# and C#). The notation includes several notes with accents and a fermata at the end. The word "rit." is written above the staff.

Handwritten musical notation for a piano accompaniment, consisting of two staves. The notation includes chords and melodic lines. The word "rit." is written above the right-hand staff.

Handwritten musical notation on a single staff, starting with a treble clef and a key signature of two sharps. It features a few notes with accents and a fermata. The tempo marking "a tempo" is written below the staff.

Handwritten musical notation for a piano accompaniment, consisting of two staves. The notation is dense with many notes and includes the tempo marking "a tempo" on the left.

Handwritten musical notation on a single staff, starting with a treble clef and a key signature of two sharps. It includes notes with accents and a fermata. The tempo marking "ben ten." is written below the staff, and "X longa." is written below a note.

Handwritten musical notation for a piano accompaniment, consisting of two staves. It includes notes with accents and a fermata. The tempo marking "ben ten." is written below the left-hand staff, and "longa." is written below the right-hand staff.

7th April 83.